



# Wild Blueberry

## FACT SHEET



### Weeds 9

Fact Sheet No. 249, UMaine Extension No. 2202

#### **Pointed Broom Sedge, *Carex scoparia***

Life cycle - Perennial sedge. Reproduces by rootstocks and seed. Flowers from July to September.

Description - Grass like sedge. Stems 1/2' to 2 1/2' tall and triangular. Leaves less than 1/8' wide. Three to ten flower spikes, oblong, narrow at both ends, brownish or straw colored, 1/4" to 3/4" long, 1/8" to 1/4" in diameter with many flowers.

#### **Three-square Sedge, *Scirpus americanus***

Life cycle - Perennial sedge. Reproduces by rootstocks and seed. Flowers from June to September.

Description - stems are sharply triangular and 1' to 4' tall. One to 3 leaves narrow, tapering to tip and shorter than stem. Flowers 1/4" to 1" long and egg shaped, in clusters of 1 to 7. A single, 1 1/2" to 4" long slender leaf at base of flower cluster.

#### **Quack-grass, *Agropyron repens***

Life cycle - Perennial grass. Reproduces by seed and running rootstock. Flowers from July to September.

Description - stems 1' to 4' tall with sheathes usually shorter than internodes. Leaf blades are 3" to 12" long and 1/8" to 3/8" wide, smooth beneath and rough above. Ligule very short.

#### **Little Bluestem or Bunch Grass, *Schizachyrium scoparius* or *Andropogon scoparius***

Life cycle - Perennial grass. Reproduces by seed. Flowers from August to October.

Description - Stems 1 1/2' to 4 1/2' tall with smooth sheathes. Leaf blades are 6" to 1 1/2' long and 1/8" to 1/4" wide. Seed heads 1" to 2 1/2" long, loose, with spreading hairs. Awn, is 1/4" to 1/2" long, spiral, bent and rough.

#### **Wild Oat-grass, *Danthonia spicata***

Life cycle - Perennial grass. Reproduces by seed. Flowers from July to September.

Description - Stems 1' to 2 1/2' tall and smooth. Sheathes shorter than the internodes. Leaf blades are rough, 5" to 8" long and 1/8" wide or less. Ligules are very short. Seed heads are 1" to 2" long. The bent, spreading awn closely twisted at the base.

---

Prepared by David E. Yarborough and Phoebe Nylund, The University of Maine, Orono, ME 04469.  
Replaces March 1989 by Tom DeGomez, David Yarborough and Christopher Campbell. (Revised 2003)

A Member of the University of Maine System

Published and distributed in furtherance of Acts of Congress of May 8 and June 30, 1914, by the University of Maine Cooperative Extension, the Land Grant University of the state of Maine and the U.S. Department of Agriculture cooperating. Cooperative Extension and other agencies of the U.S.D.A. provide equal opportunities in programs and employment.



Figure 1: Pointed Broom Sedge flower.



Figure 2: Pointed Broom Sedge plant.



Figure 3: Three-Square Sedge



Figure 4: Quack-grass

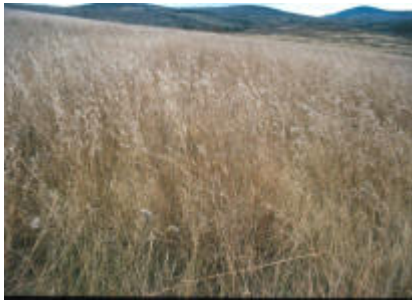


Figure 5: Bunch Grass plant.



Figure 6: Bunch Grass flower.



Figure 7: Wild Oat-grass



Figure 8: Wild Oat-grass