



# Wild Blueberry

## FACT SHEET



### Weeds 8

Fact Sheet No. 248, UMaine Extension No. 2201

#### **Grasses, Sedges and Rushes**

Grasses, sedges and rushes look very similar at first glance and can be difficult to identify correctly. The very best method of telling them apart are with flower characteristics. However, these parts are often very small and can be difficult to distinguish in the field. There are some vegetative features that can help distinguish one from another. The structure of the stems and leaves can give some clues to telling them apart. The important parts of the stem used for identification are the joints, internodes, and the cross section of the stem. The important characteristics of the leaves are the ligules and the sheath orientation.

This diagram illustrates some of parts that most grasses, sedges and rushes have. Use it to determine if the weed you are trying to identify is a grass, sedge or rush. Then proceed to the descriptions of the individual weeds in this fact sheet and in Weeds 9 to determine the name of the weed. (See figure 1)

#### **Common Rush, *Juncus effusus***

*Life cycle* - Perennial rush. Reproduces by seed. Flowers July to September.

*Description* - Stands 1' to 2 1/2' high, dense tufts of leaves at base. Stems are soft. Flower head has many flowers, 1" to 4" high. Rootstock is stout, branching and proliferous.

#### **Wire-grass, Slender rush, *Juncus tenuis***

*Life cycle* - Perennial rush. Reproduces by seed. Flowers June to September.

*Description* - Tufted, 2" to 30" high. Leaves at the base are very narrow and about half the height of the stem. Flowers are less than 4" high.

---

Prepared by David E. Yarborough and Phoebe Nylund, The University of Maine, Orono, ME 04469.  
Replaces March 1989 by Tom DeGomez, David Yarborough and Christopher Campbell. (Revised June 2002)

A Member of the University of Maine System

Published and distributed in furtherance of Acts of Congress of May 8 and June 30, 1914, by the University of Maine Cooperative Extension, the Land Grant University of the state of Maine and the U.S. Department of Agriculture cooperating. Cooperative Extension and other agencies of the U.S.D.A. provide equal opportunities in programs and employment.

Figure 1: Grasses, Sedges and Rushes

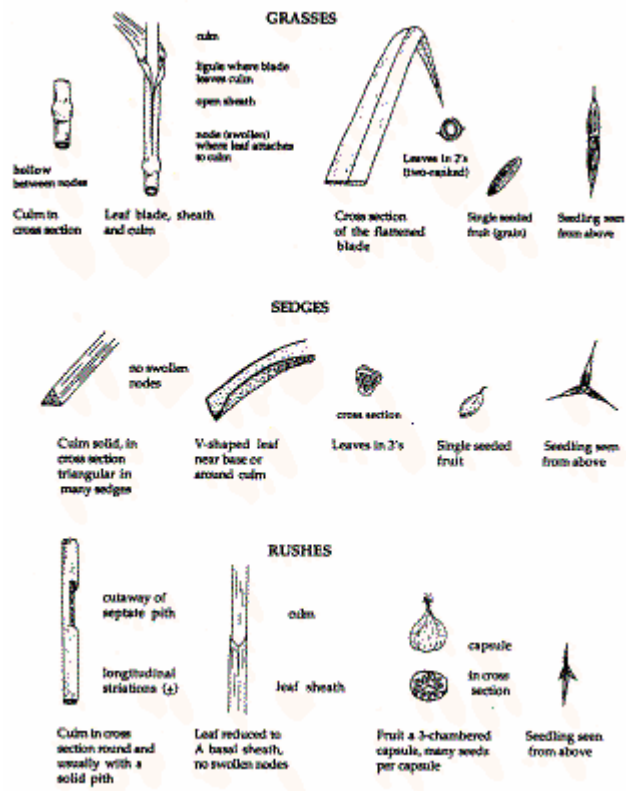


Figure 2: Common Rush



Figure 2: Common Rush



Figure 3: Wire-grass, Slender rush



Figure 3: Wire-grass, Slender rush